

Effect of genotype and climate on the agronomic performance of 3 genotypes of *Coffea Arabica*

Thuan Sarzynski^{1,2,3}, Clément Rigal^{4,5}, Pierre Marraccini^{1,2}, Philippe Vaast⁶, Hervé Etienne^{1,2}.

¹ CIRAD (Centre de Coopération Internationale en Recherche Agronomique Pour le Développement), UMR DIADE (Diversity, Adaptation, Development of Plants), University of Montpellier, CIRAD, IRD, F-34398 Montpellier, France. ² UMR DIADE (Diversity, Adaptation, Development of Plants), University of Montpellier, CIRAD, IRD, F-34398 Montpellier, France. ³ NOMAFSI (Northern Mountainous Agriculture Forestry Science Institute) Mai Son research centre, Son La, Vietnam ⁴ CIRAD UMR ABSYS, Montpellier, France. ⁵ ABSYS, Université Montpellier, CIRAD, INRAE, Supagro, Montpellier, France. ⁶ UMR Eco & Sols, CIRAD, 34398 Montpellier, France

Leave empty for poster number



Introduction

Coffee provides a livelihood for over 12 million households in tropical countries such as Brazil, Vietnam, Colombia and Indonesia. Climate change leads to increased average temperatures and changes in rain patterns across the globe, which influences coffee productivity (1). As for many crops, *Coffea arabica*, is sensitive to environmental changes caused by climate change. Coffee plant breeding programs have produced vigorous coffee genotypes with higher yield (2) however, the effect of climate change on these genotypes have never been investigated.

Materials/Methods

The effects of genotype and climate on the agronomical performance of *Coffea arabica* were studied using nine trials covering an altitudinal gradient [600–1100 m above sea level (m.a.s.l.)] with three genotypes of *Coffea arabica* in the northwest mountainous region of Vietnam. The impacts of the climatic conditions on agronomical traits were assessed.

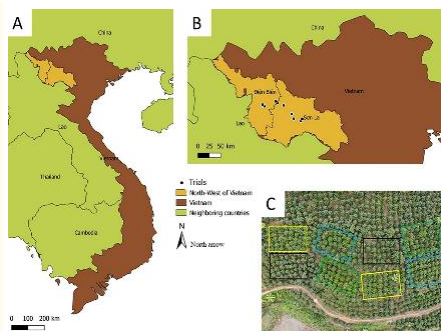


Figure 1: Design and location of the trials studied in the North-West of Vietnam.

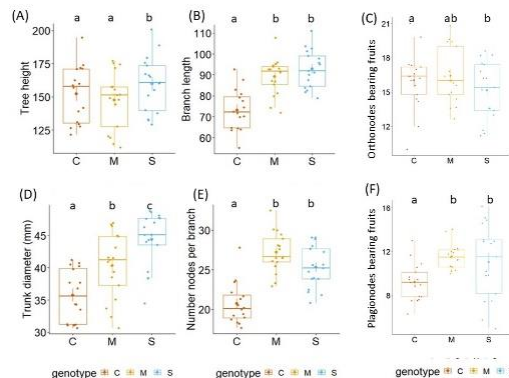


Figure 2: Boxplots of the variables showing a genotype effect.

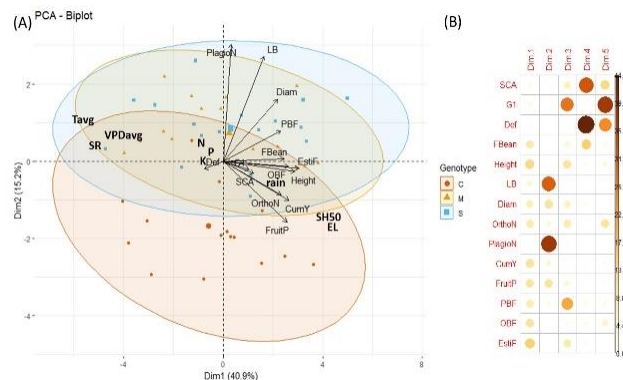


Figure 3: PCA of the phenotype variables. Primary variables are phenotype variables and secondary variables (bold) are environmental variables.

Results/Discussion

Genotype had a significant effect on height, branch length, diameter, nodes per branch. Catimor was less vigorous than F1-hybrids and have lower height, branch length, trunk diameter and number of nodes. The environment effect was significant for the fruit bean ratio, height, diameter, orthonodes and cumulated yield. Height, diameter was significantly affected by temperature but not by soil water content. Cumulated yield and fruit bean ratio were significantly affected by temperature and soil water content. Due of a very low application of NPK, fertilization rate did not affect agronomic performance..

Conclusion/Perspectives

This study of the agronomic performance of 3 genotypes of *Coffea arabica* in Northwest of Vietnam highlights the higher vigor of the new varieties compared to the Catimor. Yield was significantly affected by temperature and soil water content, forecasting future struggles of *C.arabica* with climate change in the region.

References:

- (1) Bunn, C., P. Läderach, O. Ovalle Rivera, and D. Kirschke. 2015. A bitter cup: climate change profile of global production of Arabica and Robusta coffee. *Clim Change* 129(1–2): 89–101. doi: 10.1007/s10584-014-1306-x.
- (2) Vossen, H. Van Der, and B. Bertrand. 2015. Next generation variety development for sustainable production of arabica coffee (*Coffea arabica* L.): a review. (December 2016). doi: 10.1007/s10681-015-1398-z.