

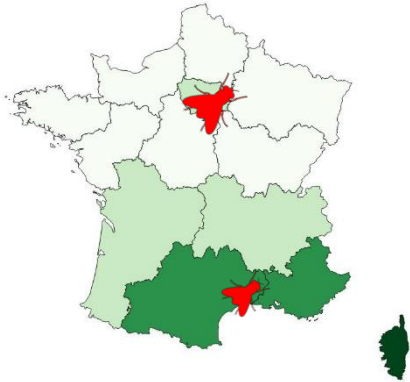
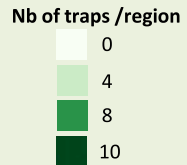


Moultet Raphaëlle, Balmès Valérie

Anses, Plant Health Laboratory, 755 avenue du campus Agropolis, CS 30016, FR-34988 Montferrier-sur-Lez Cedex, France

Following the detection of *Bactrocera dorsalis* complex in Italy in 2018, implementation of a national surveillance survey in France in 2019

Network of methyl eugenol traps located on crops and sites at risk

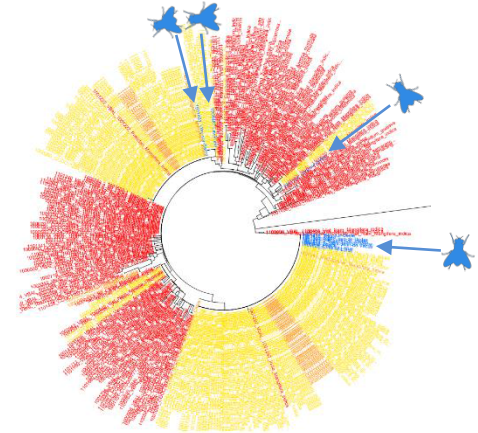


- **12 specimens of the *B. dorsalis* complex trapped**
- 7 in the Ile-de-France region, close to the Rungis international market and Orly airport
- 5 in the Occitanie region, close to the city of Montpellier
- No evidence of establishment or damage

Investigation of possible origins / pathways of entry

Specimens origin

- France
- Asia
- Indian Ocean
- Africa



Neighbor-joining tree of COI sequences

- Sequencing COI barcode region of the 12 specimens trapped
- Comparison with over 400 barcode sequences representative of the different pathways of entry of the *B. dorsalis* complex into France
- **4 COI haplotypes detected among the 12 intercepted specimens**

→ Seems like repeated introductions of *B. dorsalis* complex through various pathways, without sign of establishment

→ Need to better understand the origins of such introductions

→ A PhD project starting "BacTrack" : validation of high-throughput molecular tools for *B. dorsalis* tracking (ANSES / CIRAD)