



Poupette

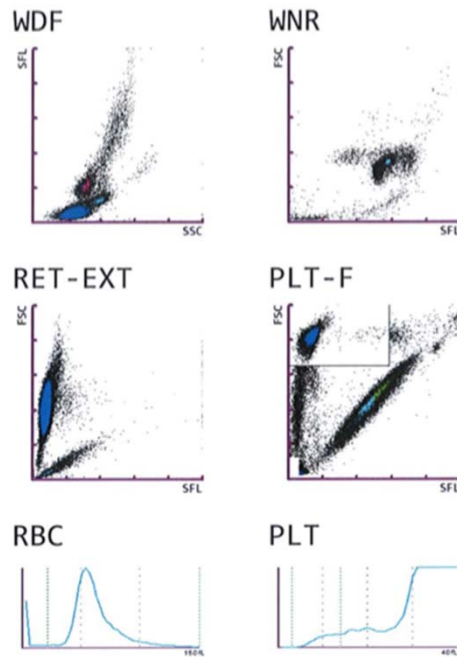
- 6-year-old spayed female, Domestic shorthair
- Weakness, slight tachypnea for several weeks.

- Clinical examination : a gallop rhythm , a 3/6 grade left apex systolic murmur, pale mucous membranes and a tachypnea.

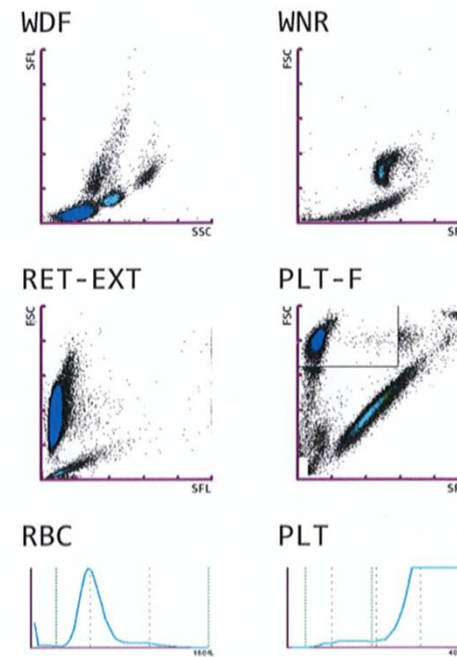
CBC



Poupette



Healthy cat





WBC	4.98	[10 ³ /uL]		
RBC	4.86	- [10 ⁶ /uL]		
HGB	7.4	- [g/dL]		
HCT	23.2	- [%]		
MCV	47.7	[fL]		
MCH	15.2	[pg]		
MCHC	31.9	- [g/dL]		
PLT &F	225	* [10 ³ /uL]		
RDW-SD	39.3	[fL]		
RDW-CV	20.3	[%]		
PDW	----	[fL]		
MPV	10.6	* [fL]		
P-LCR	32.3	* [%]		
PCT	0.05	* [%]		
NRBC	0.32	[10 ³ /uL]	6.4	[%]
NEUT	1.67	* [10 ³ /uL]	33.5	* [%]
LYMPH	1.91	* [10 ³ /uL]	38.4	* [%]
MONO	1.28	* [10 ³ /uL]	25.7	* [%]
EO	0.08	* [10 ³ /uL]	1.6	* [%]
BASO	0.04	[10 ³ /uL]	0.8	[%]
RET	0.30	[%]	0.0146	[10 ⁶ /uL]
IRF	11.1	[%]		
LFR	88.9	[%]		
MFR	7.4	[%]		
HFR	3.7	[%]		
RET-He	17.2	[pg]		
IPF	42.8	* [%]		
WBC-BF		[10 ³ /uL]		
RBC-BF		[10 ⁶ /uL]		
MN		[10 ³ /uL]		[%]
PMN		[10 ³ /uL]		[%]
TC-BF#		[10 ³ /uL]		
WBC IP Message			RBC IP Message	
WBC Abn Scattergram			Hypochromia	
Monocytosis			Anemia	
PLT-I	43	* [10 ³ /uL]		
PLT-O	245	* [10 ³ /uL]		
PLT-F	225	* [10 ³ /uL]		
WBC-D	5.03	* [10 ³ /uL]		
RBC-He	16.3	[pg]		

Analyte	SPA-F group	n	Normality, P	Median and range	Mean	2.5th percentile (90% CI)	97.5th percentile (90% CI)	Previously reported RIs ADVIA 120 ¹ 2.5th-97.5th percentiles
WBC	NLA + HA	80 ^a	0.082	8.7	9.1	4.0	15.2	7.73-18.6
(x 10 ⁹ /l)*				3.8-17.2		(3.8; 4.6)	(14.0; 17.2)	
Neutrophils	NLA + HA	80 ^t	0.000	3.2	3.7	1.7	8.8	3.14-12.52
(x 10 ⁹ /l)*				1.5-10.8		(1.5; 1.8)	(7.5; 10.8)	
Lymphocytes	NLA + HA	80 ^t	0.019	4.3	4.4	1.2	10.2	1.31-7.46
(x 10 ⁹ /l)*				1.2-10.4		(1.2; 1.5)	(8.1; 10.4)	
Monocytes	NLA + HA	79 ^{b,t}	0.024	0.3	0.3	0.1	0.6	0.13-1.08
(x 10 ⁹ /l)*				0.1-0.7		(0.1; 0.1)	(0.5; 0.7)	
Eosinophils	NLA + HA	76 ^{c,d,e,t}	0.007	0.5	0.6	0.1	1.2	0.06-2.21
(x 10 ⁹ /l)*				0.1-1.2		(0.1; 0.3)	(1.0; 1.2)	
RBC-I	NLA + HA	81	0.035	9.7	9.6	6.7	11.2	-
(x 10 ¹² /l)*				6.5-11.5		(6.5; 7.7)	(11.1; 11.5)	
RBC-O	NLA + HA	81	0.021	9.4	9.2	6.6	10.8	5.92-11.16
(x 10 ¹² /l)				6.3-11.2		(6.3; 7.4)	(10.5; 11.2)	
HGB (g/l)	NLA	40	0.356	136.3	133.9	99.1	165.9	8.17-15.26
				99.0-166.0		(99.0; 113.0)	(158.4; 166.0)	
HTE (fl)	NLA + HA	81	0.511	0.39	0.39	0.29	0.51	0.24-0.46
				0.29-0.52		(0.29; 0.33)	(0.47; 0.52)	
MCV (fl)	NLA + HA	81	0.609	41.1	41.3	34.4	49.3	36.96-54.98
				34.3-53.2		(34.3; 35.3)	(47.5; 53.2)	
MCH (pg)	NLA + HA	81	0.176	14.6	14.5	12.3	16.4	11.28-17.24
				12.3-17.2		(12.3; 12.7)	(16.1; 17.2)	
MCHC (g/dl)	NLA + HA	81	0.873	35.7	35.7	32.5	39.2	26.24-35.91
				30.8-39.5		(30.8; 33.2)	(38.5; 39.5)	
RDW-CV (%)	NLA + HA	81	0.129	24.0	24.1	19.7	29.3	13.81-21.11
				19.6-33.0		(19.6; 21.0)	(27.7; 33.0)	
RDW-SD (fl)	NLA + HA	81	0.000	28.0	28.6	24.9	40.6	-
				24.8-48.1		(24.7; 25.8)	(34.0; 48.1)	
RET (x 10 ⁹ /l)	NLA + HA	80 ^a	0.000	45.8	49.7	19.1	107.1	3.66-94.06
				10.3-107.8		(10.3; 24.9)	(90.3; 107.8)	
RET (%)	NLA + HA	80 ^b	0.000	0.5	0.5	0.2	1.1	0.05-1.17
				0.1-1.3		(0.1; 0.3)	(1.0; 1.3)	
IRF (%)	NLA	40	0.037	6.8	8.0	0.7	18.7	-
				0.7-18.8		(0.7; 1.5)	(16.7; 18.8)	
LFR (%)	NLA	40	0.037	93.2	92.0	81.3	99.3	-
				81.3-99.3		(81.3; 83.6)	(98.5; 99.3)	
MFR (%)	NLA	40	0.081	5.6	6.1	0.0	13.8	-
				0.0-13.9		(0.0; 1.5)	(12.6; 13.9)	
HFR (%)	NLA + HA	81	0.030	2.2	2.3	0.0	5.9	-
				0.0-7.6		(0.0; 0.3)	(5.0; 7.6)	
PLT-O	NLA	40	0.358	286	281	87	610	41.92-629.85
(x 10 ⁹ /l)				86-615		(86; 154)	(437; 615)	
PLT-I	NLA	40	0.233	180	189	33	516	-
(x 10 ⁹ /l)				33-520		(33; 76)	(345; 520)	